

PS-D系列功率電感

PS-D SERIES SMD POWER INDUCTORS

• 特征 FEATURES:

- 超薄;
- 屏蔽結構;
- 適合于表面貼裝,適合于回流焊。
- Low profile
- Magnetic shielded
- SMT type, suitable for reflow soldering.



• 應用 APPLICATIONS

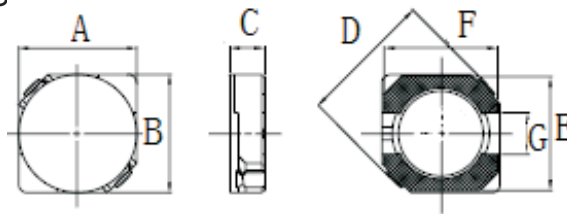
- 移動通信;
- 筆記本電腦;
- DC/DC轉換。
- Portable communication equipment
- Notebook Computer
- DC/DC converters etc.

• 產品規格型號的表示方法HOW TO ORDER

PS 5D28 — 150 M T
 ① ② ③ ④ ⑤

① 產品代號 Product Code		② 規格尺寸(L×W×T) (mm) Dimensions		③ 感量(μH) Inductance		④ 誤差 Tolerance		⑤ 包裝方式 Packaging Style	
PS-D	PS-D系列 功率電感	3D18	3.8×3.8×1.8	150	15	M	±20%	T	卷帶盤裝 Tape & Reel
		4D18	4.7×4.7×1.8	101	100	N	±30%	B	散裝 Bulk
		5D28	5.7×5.7×2.8	102	1000				
		6D38	6.7×6.7×3.8						
		8D43	8.0×8.0×4.3						

• 外形尺寸 DIMENSIONS

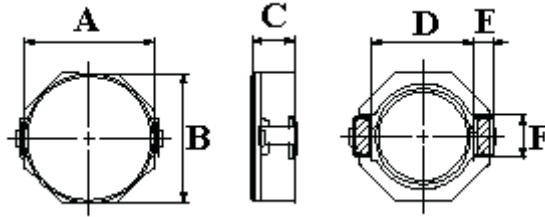


單位(Unit): mm

型號Part	A	B	C	D	E	F	G
PS2D11	3.0±0.2	3.0±0.2	1.1±0.2	3.7±0.3	3.0	3.0	1.0
PS2D14	3.0±0.2	3.0±0.2	1.55±0.2	3.7±0.3	3.0	3.0	1.0
PS2D18	3.0±0.2	3.0±0.2	1.8±0.2	3.7±0.3	3.0	3.0	1.0
PS3D18	3.8±0.2	3.8±0.2	1.8±0.2	4.2±0.3	3.8	3.8	1.2
PS3D28	3.8±0.2	3.8±0.2	2.8±0.2	4.2±0.3	3.8	3.8	1.2
PS4D18	4.7±0.3	4.7±0.3	1.8±0.2	5.1±0.3	4.7	4.7	1.5
PS4D28	4.7±0.3	4.7±0.3	2.8±0.2	5.1±0.3	4.7	4.7	1.5
PS5D18	5.7±0.3	5.7±0.3	1.8±0.2	6.1±0.3	5.7	5.7	2.0
PS5D28	5.7±0.3	5.7±0.3	2.8±0.2	6.1±0.3	5.7	5.7	2.0
PS6D28	6.7±0.3	6.7±0.3	2.8±0.2	7.5±0.3	6.7	6.7	2.0
PS6D38	6.7±0.3	6.7±0.3	3.8±0.2	7.5±0.3	6.7	6.7	2.0

PS-D系列功率電感

PS-D SERIES SHIELDED SMD POWER INDUCTORS



Unit: mm

型號Part	A	B	C	D	E	F
8D28	8.0±0.3	8.0±0.3	2.8±0.2	6.3	1.2	2.5
8D38	8.0±0.3	8.0±0.3	3.8±0.2	6.3	1.2	2.5
8D43	8.0±0.3	8.0±0.3	4.3±0.2	6.3	1.2	2.5

• 電性能參數ELECTRICAL CHARACTERISTICS

PS2D11 Series

型號 Part Number	電感量 L (μH)	公差 Tolerance	測試頻率 Test Freq.	直流電阻 DCR(Ω)Max	Isat(A)
PS2D11-1R0NT	1.0	±30%	100kHz	0.095	1.10
PS2D11-1R5NT	1.5	±30%	100kHz	0.090	1.10
PS2D11-2R2NT	2.2	±30%	100kHz	0.066	0.70
PS2D11-4R7NT	4.7	±30%	110kHz	0.175	0.70
PS2D11-6R8NT	6.8	±30%	100kHz	0.284	0.60
PS2D11-100MT	10	±20%	100kHz	0.428	0.48

PS2D14 Series

型號 Part Number	電感量 L (μH)	公差 Tolerance	測試頻率 Test Freq.	直流電阻 DCR(Ω)Max	Isat(A)
PS2D14-1R0NT	1.0	±30%	100kHz	0.056	1.80
PS2D14-1R5NT	1.5	±30%	100kHz	0.079	1.55
PS2D14-2R2NT	2.2	±30%	100kHz	0.094	1.30
PS2D14-2R7NT	2.7	±30%	100kHz	0.125	1.10
PS2D14-3R3NT	3.3	±30%	100kHz	0.125	1.00
PS2D14-4R7NT	4.7	±30%	100kHz	0.169	0.70
PS2D14-5R6NT	5.6	±30%	100kHz	0.175	0.65
PS2D14-100MT	10	±20%	100kHz	0.294	0.30
PS2D14-470MT	47	±20%	100kHz	1.488	0.30

PS2D18 Series

型號 Part Number	電感量 L (μH)	公差 Tolerance	測試頻率 Test Freq.	直流電阻 DCR(Ω)Max	Isat(A)
PS2D18-2R2NT	2.2	±30%	100kHz	0.066	0.78
PS2D18-3R3NT	3.3	±30%	100kHz	0.130	0.65
PS2D18-4R7NT	4.7	±30%	100kHz	0.130	0.60
PS2D18-100MT	10	±20%	100kHz	0.220	0.43
PS2D18-150MT	15	±20%	100kHz	0.240	0.32
PS2D18-220MT	22	±20%	100kHz	0.396	0.27
PS2D18-330MT	33	±20%	100kHz	0.438	0.22
PS2D18-470MT	47	±20%	100kHz	0.500	0.19

Isat: 飽和電流，加Isat時，電感值相對初始值下降 < 35%

Isat: Saturation Current, the current when the inductance becomes 35% lower than its initial value.

PS3D18 Series

型號 Part Number	電感量 L (μH)	公差 Tolerance	測試頻率 Test Freq.	直流電阻 DCR(Ω)Max	Isat(A)
PS3D18-1R0NT	1.0	±30%	100kHz	0.050	2.00
PS3D18-1R5NT	1.5	±30%	100kHz	0.055	1.80
PS3D18-2R2NT	2.2	±30%	100kHz	0.063	1.30
PS3D18-3R3NT	3.3	±30%	100kHz	0.069	1.20
PS3D18-4R7NT	4.7	±30%	100kHz	0.107	0.80
PS3D18-100MT	10	±20%	100kHz	0.205	0.70
PS3D18-220MT	22	±20%	100kHz	0.420	0.65
PS3D18-330MT	33	±20%	100kHz	0.760	0.38
PS3D18-221MT	220	±20%	100kHz	3.800	0.10

PS4D18 Series

型號 Part Number	電感量 L (μH)	公差 Tolerance	測試頻率 Test Freq.	直流電阻 DCR(Ω)Max	Isat(A)
PS4D18-1R2NT	1.2	±30%	100kHz	0.045	1.72
PS4D18-2R2NT	2.2	±30%	100kHz	0.075	1.32
PS4D18-4R7NT	4.7	±30%	100kHz	0.090	0.85
PS4D18-6R8NT	6.8	±30%	100kHz	0.160	0.76
PS4D18-100MT	10	±20%	100kHz	0.200	0.61
PS4D18-120MT	12	±20%	100kHz	0.210	0.56
PS4D18-150MT	15	±20%	100kHz	0.240	0.50
PS4D18-180MT	18	±20%	100kHz	0.338	0.48
PS4D18-220MT	22	±20%	100kHz	0.397	0.41

PS4D28 Series

型號 Part Number	電感量 L (μH)	公差 Tolerance	測試頻率 Test Freq.	直流電阻 DCR(Ω)Max	Isat(A)
PS4D28-2R2NT	2.2	±30%	100kHz	0.045	2.04
PS4D28-4R7NT	4.7	±30%	100kHz	0.072	1.32
PS4D28-100MT	10	±20%	100kHz	0.128	1.00
PS4D28-200MT	20	±20%	100kHz	0.235	0.70
PS4D28-471MT	470	±20%	100kHz	4.400	0.20

PS5D18 Series

型號 Part Number	電感量 L (μH)	公差 Tolerance	測試頻率 Test Freq.	直流電阻 DCR(Ω)Max	Isat(A)
PS5D18-4R1NT	4.1	±30%	10kHz	0.057	1.95
PS5D18-6R8NT	6.8	±30%	10kHz	0.095	1.42
PS5D18-220MT	22	±20%	10kHz	0.290	0.80
PS5D18-470MT	47	±20%	10kHz	0.595	0.54
PS5D18-820MT	82	±20%	10kHz	0.978	0.41

Isat: 飽和電流，加Isat時，電感值相對初始值下降 ≤ 35%

Isat: Saturation Current, the current when the inductance becomes 35% lower than its initial value.

PS5D28 Series

型號 Part Number	電感量 L (μH)	公差 Tolerance	測試頻率 Test Freq.	直流電阻 DCR(Ω)Max	Isat(A)
PS5D28-2R2NT	2.2	±30%	10kHz	0.036	2.10
PS5D28-4R7NT	4.7	±30%	10kHz	0.041	1.00
PS5D28-6R2NT	6.2	±30%	10kHz	0.045	1.80
PS5D28-6R8NT	6.8	±30%	10kHz	0.047	1.75
PS5D28-100MT	10	±20%	10kHz	0.067	1.20
PS5D28-150MT	15	±20%	10kHz	0.103	1.10
PS5D28-220MT	22	±20%	10kHz	0.150	0.90
PS5D28-101MT	100	±20%	10kHz	0.520	0.42

PS6D28 Series

型號 Part Number	電感量 L (μH)	公差 Tolerance	測試頻率 Test Freq.	直流電阻 DCR(Ω)Max	Isat(A)
PS6D28-4R7NT	4.7	±30%	10kHz	0.039	2.50
PS6D28-6R8NT	6.8	±30%	10kHz	0.054	2.10
PS6D28-8R2NT	8.2	±30%	10kHz	0.060	1.90
PS6D28-100MT	10	±20%	10kHz	0.065	1.70
PS6D28-180MT	18	±20%	10kHz	0.095	1.32
PS6D28-101MT	100	±20%	10kHz	0.535	0.54
PS6D28-331MT	330	±20%	10kHz	1.790	0.25

PS6D38 Series

型號 Part Number	電感量 L (μH)	公差 Tolerance	測試頻率 Test Freq.	直流電阻 DCR(Ω)Max	Isat(A)
PS6D38-1R0NT	1.0	±30%	10kHz	0.016	4.50
PS6D38-1R5NT	1.5	±30%	10kHz	0.017	4.20
PS6D38-2R2NT	2.2	±30%	10kHz	0.019	4.00
PS6D38-3R3NT	3.3	±30%	10kHz	0.020	3.72
PS6D38-4R7NT	4.7	±30%	10kHz	0.032	2.80
PS6D38-6R8NT	6.8	±30%	10kHz	0.034	2.50
PS6D38-7R3NT	7.3	±30%	10kHz	0.039	2.10
PS6D38-100MT	10	±20%	10kHz	0.048	2.00
PS6D38-120MT	12	±20%	10kHz	0.053	1.70
PS6D38-150MT	15	±20%	10kHz	0.057	1.60
PS6D38-180MT	18	±20%	10kHz	0.092	1.50
PS6D38-220MT	22	±20%	10kHz	0.096	1.30
PS6D38-270MT	27	±20%	10kHz	0.109	1.20
PS6D38-330MT	33	±20%	10kHz	0.124	1.10
PS6D38-390MT	39	±20%	10kHz	0.138	1.00
PS6D38-470MT	47	±20%	10kHz	0.155	0.95
PS6D38-560MT	56	±20%	10kHz	0.202	0.85
PS6D38-680MT	68	±20%	10kHz	0.234	0.75
PS6D38-820MT	82	±20%	10kHz	0.324	0.70
PS6D38-331MT	330	±20%	10kHz	1.350	0.38

Isat: 飽和電流，加Isat時，電感值相對初始值下降 < 35%

Isat: Saturation Current, the current when the inductance becomes 35% lower than its initial value.

PS8D28 Series

型號 Part Number	電感量 L (μH)	公差 Tolerance	測試頻率 Test Freq.	直流電阻 DCR(Ω)Max	Isat(A)
PS8D28-2R2NT	2.2	±30%	100kHz	0.025	5.00
PS8D28-4R7NT	4.7	±30%	100kHz	0.048	3.80
PS8D28-330MT	33	±20%	100kHz	0.230	1.40

PS8D38 Series

型號 Part Number	電感量 L (μH)	公差 Tolerance	測試頻率 Test Freq.	直流電阻 DCR(Ω)Max	Isat(A)
PS8D38-3R3NT	3.3	±30%	100kHz	0.029	5.0
PS8D38-4R7NT	4.7	±30%	100kHz	0.029	5.0
PS8D38-100MT	10	±20%	100kHz	0.049	3.2
PS8D38-220MT	22	±20%	100kHz	0.105	2.3

PS8D43 Series

型號 Part Number	電感量 L (μH)	公差 Tolerance	測試頻率 Test Freq.	直流電阻 DCR(Ω)Max	Isat(A)
PS8D43-4R7NT	4.7	±30%	100kHz	0.027	4.80
PS8D43-150MT	15	±20%	100kHz	0.074	2.90
PS8D43-470MT	47	±20%	100kHz	0.175	1.50
PS8D43-680MT	68	±20%	100kHz	0.280	1.20
PS8D43-101MT	100	±20%	100kHz	0.430	1.00
PS8D43-331MT	330	±20%	100kHz	1.060	0.50

Isat: 飽和電流，加Isat時，電感值相對初始值下降 ≤ 35%

Isat: Saturation Current, the current when the inductance becomes 35% lower than its initial value.